



# **Bathy-2010 PC™**

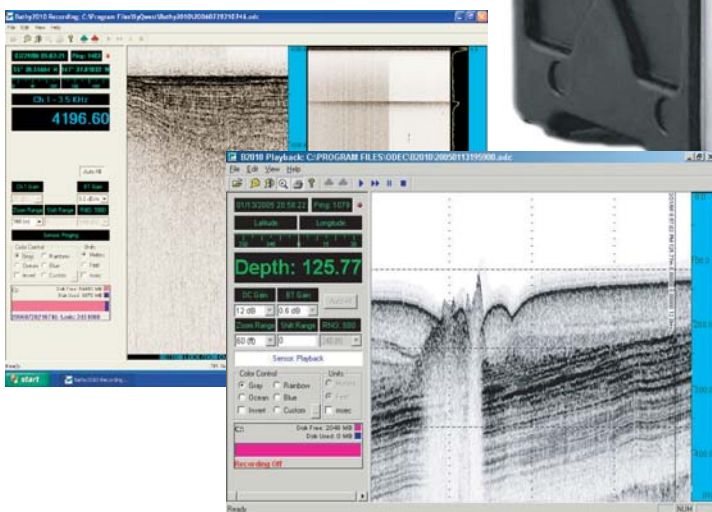
## **Precision Chirp Profiler**



**The Bathy-2010 PC™ is a portable high-resolution, precision Chirp Profiler. It is designed for bathymetric and sub bottom marine surveys up to 5,000 meters of water depth. Available as a dual frequency model.**

**Ease of use, and cost efficiency make this device a perfect choice for bathymetric survey and marine geophysical applications.**

**The sensor unit is extremely compact, interfaces directly to a standard laptop or PC, and comes complete with transceiver unit and Windows® PC Software**



- ◆ Centimeter Resolution
- ◆ GPS Input, NMEA Compatible
- ◆ Hypack & SonarWiz Compatible
- ◆ Data Storage & Playback
- ◆ Zoom Modes ◆ Event Marks
- ◆ Single or Dual Frequency
- ◆ Sound Velocity ◆ Draft Offset



222 Metro Center Blvd. / Warwick, RI 02886  
Tel: (401) 921-5170 Fax: (401) 921-5159

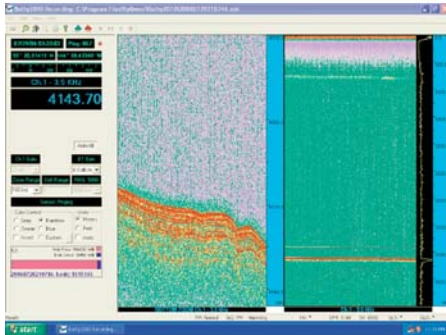
Email: [sales@syqwestinc.com](mailto:sales@syqwestinc.com) Web: [www.syqwestinc.com](http://www.syqwestinc.com)



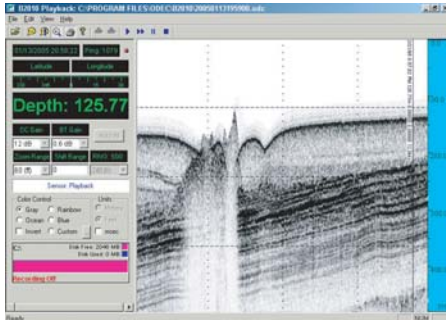
# SyQwest Incorporated

Deep Ocean  
Laminated Sediments

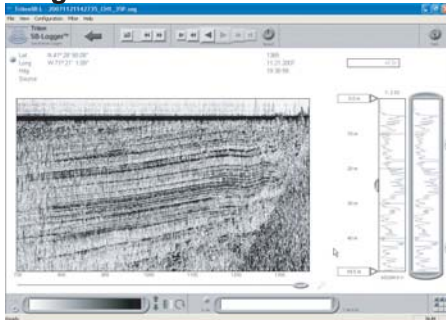
# Bathy-2010 PC™



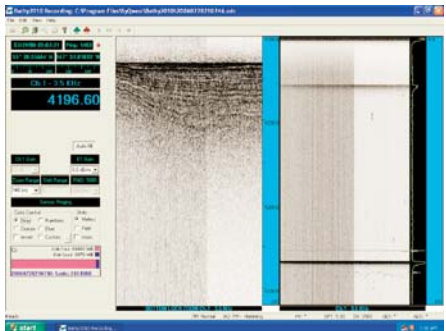
300 Meter Sediment Penetration



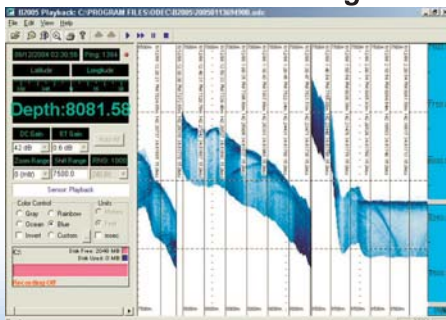
High Resolution Strata



Bottom Zoom



Proven Bottom Tracking



## SPECIFICATIONS

<b>Units:</b>	Feet or Meters
<b>Depth Ranges:</b>	30, 60, 120, 240, 480, 800, 1500, 2400, 3000, 6000, 15000 Feet 10, 20, 40, 80, 150, 300, 500, 750, 1000, 2000, 5000 Meters Auto-ranging Modes in all units.
<b>Shift Range:</b>	0-450 Ft in 1 foot increments, 0-150 mts in 1 meter incr.
<b>Zoom Range:</b>	15, 30, 60, 120, 240, 480 Feet 5, 10, 20, 40, 80, 160 Meters
<b>Zoom Modes:</b>	Bottom Zoom, Bottom Lock Zoom, Marker Zoom, Normal Data, Zoom Data, Navigation, Depth,
<b>Display:</b>	Command/Status, Color Control for Data: 4 Selections or Custom (User Input), Data Color Invert possible
<b>Depth Resolution:</b>	0.1 Feet, 0.01 Meters
<b>Strata Resolution:</b>	8 cm with > 300 Meters of bottom penetration (bottom type dependent)
<b>Depth Accuracy:</b>	Meets or exceeds all current IHO hydrographic requirements for single beam echo sounders 0-40m 2.5cm, 40-200m 5.0cm, >200m 10.0cm; or +/- .1% of depth corrected for sound velocity
<b>Speed of Sound:</b>	User Selectable 1500 Meters/Second, 4800 Feet/Second; Adjustable in increments of 1 M/sec or 1 FT/sec
<b>Geographic Position:</b>	NMEA 0183, GLL, GGA, RMC, VTG, VHW, HDT Selectable Baud Rates (RS-232) 4800, 9600, 19200, 38400
<b>Printer Output:</b>	Interface to TDU Series Thermal Printers
<b>Shallow Water Operation:</b>	< 1 Meter; bottom type dependant
<b>Transmit Rate:</b>	Up to 20 Hz, depth and operator mode dependant
<b>Event Marks:</b>	Periodic, External, and/or Manual (Periodic selectable in 1 minute intervals)
<b>Data File Output:</b>	Stores Depth, Navigation, and Graphic Data in ODC format (Proprietary) and Standard SEG-Y Normal and Zoom Data stored is Pixel data and can be played back and/or printed.
<b>Data File Playback:</b>	Files can be played back and/or printed at Normal or Fast-Forward speed, with Pause and Zoom and a Playback Scroll Bar for ease of file playback.
<b>Frequency Output:</b>	3.5 to 200 KHz
<b>Transmit Output Power:</b>	4KW (Pulsed) (Maximum)
<b>Input Power:</b>	10-30 Volts DC, Nominal power 75 Watts, 110/220 VAC Optional
<b>Dimensions:</b>	17" D x 19" W x 5.25" H, Weight: 11 lbs. (Installed in Rack: 23"D x 22"W x 7.5"H 25lbs)
<b>Environmental:</b>	0 to 50 degrees C Operating Temperature 0 to 95° non-condensing